

MAHUHUKITERANGI – CHALLENGING. EXCELLING. BELONGING.



OUR PLACE

OUR MAHU STORIES



Mahurangi  
COLLEGE



# OUR PLACE IS EXCEPTIONAL

From Puhoi in the south, to Dome Valley in the north. From Kaipara in the west and to the coastal settlements of Pakiri, Leigh, Omaha, Tawharanui, Matakana, Snells Beach and Algies Bay in the east. Mahurangi College has one of the largest and most diverse secondary school catchments in New Zealand. It is this unique environment, diversity and community that provides such a wonderful foundation for what is rapidly becoming one of the leading secondary schools in the country.

At Mahurangi College we listen, encourage and support our students in their pursuit of excellence. To experience the expression of joy in a student when he or she succeeds is the greatest reward for the hard work all our staff put into making Mahurangi College the best place to create the life stories of a young person's formative years. These are the success stories that will live with us forever; **they are our Mahu stories.**

*Dean Iversen, Chairman of the Board*





# OUR STORY, OUR VISION

*Over 600 years ago the great waka Mahuhu-ki-te-rangi set sail for a new land, first exploring the upper reaches of the North Island before eventually making land at Taporapora Island just inside the Kaipara Heads. While the waka continued to explore Northland some of the crew remained – they had found their place... just as we have.*



**Mahurangi**  
COLLEGE

It is said that you need to know your past to understand your future. It is from this challenging and bold voyage 600 years ago, combined with our wonderful region and our desire to succeed, that gives us the vision of Mahurangi College:

MAHUKITERANGI

CHALLENGING – EXCELLING – BELONGING

OUR PLACE

**WE CHALLENGE**

Just like the incredible waka journey, we ask our students to dream big, to take risks, to be curious, determined and resilient. Our expectations are that we develop students who can achieve great results and to work alongside parents and whanau to help shape well-balanced, young adults with a strong sense of who they are and where they come from. We challenge all our students to look up, imagine and reach for their stars.

**WE EXCEL**

Excelling is a habit. We encourage excellence in all areas of school life and take pride in celebrating our many successes – on the sports field, in the arts and in the unique and exciting ways our students think and express themselves in the 21st century. Most importantly we are proud of our recent strong academic successes. We have seen six years of consecutive improvements in our NCEA results; we are now well above the national averages and are on track to becoming the top academic decile 7 school in the country.

**WE BELONG**

Today the Mahurangi area is one of the most remarkable in New Zealand. It's a community with a rural heart on the doorstep of a great city, tied together by the wonderful area we live in and the incredible diversity and life balance we have. We're a community that aims to pass all this onto our children so that they can grow into the finest, well-balanced men and women they can be. It is unique, it is amazing and it is 'Our Place'.



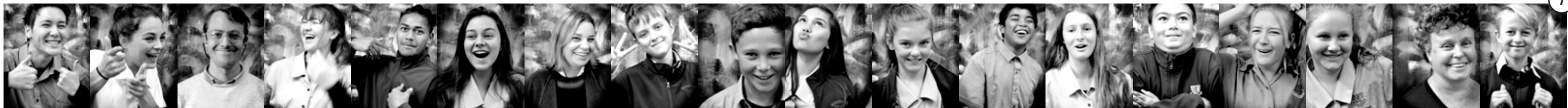


# OUR VALUES

*At Mahurangi College, we encourage, model and learn about a set of values that we believe are important for young people.*

- P** **Pursuing excellence**  
Mahuhukiterangi
- R** **Respecting self, others and our place**  
Manaakitanga
- I** **Innovative and curious**  
Ako
- D** **Determined and resilient**  
Manawaroa
- E** **Empathetic and kind**  
Atawhai

Pride in self, pride in our school and pride in **Our Place**.





# OUR LEARNING

## YEARS 7 TO 10 LEARNING

In these critical years, we structure our learning around the following key areas based on adolescence's needs:

- *Diversity*
- *Self-exploration and self-definition*
- *Meaningful participation in their schools and community*
- *Positive social interaction with their peers and adults*
- *Physical activity*
- *Competence and achievement*
- *Structure and clear limits*

### YEAR 7 AND 8 LEARNING AND STRUCTURE

Teaching and learning in Year 7 and 8 classrooms is mostly delivered through inquiry-based learning programmes. Students are provided opportunities to inquire into a range of concepts and themes over a two-year programme.

While teaching and learning is often student driven, there is also a strong focus on ensuring students master the basics in reading, writing and mathematics. Students are in homerooms for the majority of their day but are also given taster experiences in technology and arts-based subjects throughout the two years.

### YEAR 9 AND 10 LEARNING AND STRUCTURE

The secondary system begins in Year 9 and students start to move between departments for specific subject learning. Students continue to be given a taster experience in technology and arts-based subjects throughout Year 9 and the variety of subject choice increases in year 10.

Teaching and learning work towards Year 10 students gaining a diploma by the end of the year. This programme is particularly useful as it has similarities to the National Certificate in Education Achievement (NCEA) learning and assessment systems that the students will engage with in Year 11. As a result, students feel more prepared for the challenges of NCEA after completing the Year 10 diploma.

### REFLECTION AND MINDSETS

Students are encouraged to be determined and persistent in all that they do. We also ask students to be active in reflecting about what they need to work on next and to take ownership for their own learning and future pathways.

*Christina Merrick, Assistant Principal*

## YEARS 11 TO 13 LEARNING

From Year 11, students can choose from an extensive range of courses leading to credits at National Certificate in Educational Achievement (NCEA) level 1, 2 and 3. In recent years, we have seen strong improvements in our students' academic achievements with six years of consecutive improvements in our NCEA results. We are now well above national averages and are on track to achieving our goal of becoming the top Academic decile 7 school in the country.

To achieve these results, we combine traditional educational values with progressive teaching methods. The courses we offer have been carefully crafted so that students have the right skills for their chosen future pathways and can contribute successfully as global citizens.

Our senior students are guided into a broad and balanced learning programme. Both academic and vocational pathways are offered to allow students to tailor-make their own programme of study.

At Years 11 and 12, six subjects are undertaken as full-year courses; in Year 13, students specialise in five subjects. Multi-level study is often undertaken in the senior school. This means that students may select courses from two or more year levels in any one year. Again, multi-level programmes are designed with the learning needs of individual students in mind.

The academic deans at each level monitor and support students and families during their learning journey. This also transfers through to comprehensive tertiary and career advice. A key focus of the senior school is to assist students in all aspects of their progression along a career pathway – courses, university scholarships and hostel applications – as well as assistance into the more vocational pathways with CV preparation, work placement experience and industry advice and guidance.

*John Blyth, Assistant Principal*





One book, one pen, one child and one teacher can change the world and we have over 80 passionate, enthusiastic teachers striving to do just that. Our team take enormous pride in their learning programmes and in the education of our community's children and seeing them succeed is an incredible reward.

Years 7 and 8 students are taught in a homeroom environment while specialist teachers take the Year 9 to 13 cohorts. All teachers at the college continue to inquire into best practice, and strive to ensure we are continually improving on the high standard of academic success the school is achieving.

There is a wonderful feeling of collegial support and teamwork among the teachers and staff at Mahurangi, and our hope is that this carries through to our students.







## GUIDANCE AND WELL-BEING

*At Mahurangi College we pride ourselves on the 'Pastoral Care' of our students. This means that we value not only the educational development of our students but also their physical, mental, emotional and social well-being.*

Mahurangi College has a supportive, personal environment that is reinforced by the whanau and house systems within the school. New students are placed into a whanau and they will remain in the same whanau and under that teacher's guidance while at the college. The whanau teacher is one of the most important people in each student's life at school and offers the encouragement needed to excel, take up new challenges, become resilient and find different ways to connect and belong to 'Our Place'. The new students in Year 7 are welcomed and supported into the school and into their whanau by the senior students and through our Peer Support programme.

Mahurangi College offers a range of educational programmes that are based on our school values and promote student well-being. The 'Bully-Free School' programme run by the school guidance counsellors delivers strong and useful messages for our junior students around relationships and issues linked to bullying. The Healthy Relationships programme at Year 12 examines healthy versus unhealthy relationships and the key area of consent and empowerment. The Peer Mediation programme trains our Year 12 students to provide support that enables students to resolve their own difficulties in positive and respectful ways.

The school also regularly invites innovative and renowned speakers into assemblies and classes to help inspire our students and to give advice about the teen years, goal setting and future pathways. Comprehensive health programmes cover the many issues that teenagers face, from how to cope with the online world, relationships and what it means to be a teenager and a young adult. Our guidance counsellors and house s offer support and guidance to all students.

We aim to ensure that all students enjoy being part of the school, where they feel safe, and they can take advantage of the opportunities open to them. We want our students to be positive, resilient and respectful young adults.

*Cath Johnston, Assistant Principal*



*"Our students are the heart of the school and they make us proud every day. They are the ones that are working hard to challenge themselves, excel in different areas and to ensure they fulfil their goals and dreams."*

*Nicola Rhodes, Teacher*







# OUR INTERNATIONAL STUDENTS



At Mahurangi College, we believe it is important for local students to meet, work and play alongside students from other cultures. A Board of Trustees policy encourages the recruitment of a small number of students from all parts of the world (currently 3% of the school roll). Students are welcome as representatives of one of the international exchange programmes, such as Rotary or AFS, or as full fee-paying students. International students experience life and learning in our beautiful location and leave with a sense of belonging and pride.



*"My time at Mahurangi College has been marvellous. It has been amazing to live and go to school in a beautiful, coastal area but have Auckland only 40 minutes away. I have made great friends and the school has taken me on tours to see the rest of New Zealand."*

*Moritz (Germany), International Student*







*No two students are the same and all students have their own specific needs. Some need extension, some need support and we work hard to cater for all types of learners. Students who may experience difficulties in some areas and/or strengths in others are catered for with a range of programmes.*

**E-LEARNING**

Technology and 21st century learning opportunities are provided in a range of programmes. We have a Bring Your Own Device programme that makes use of the skills and knowledge needed in the 21st century, so that the potential of digital devices can be used to further enhance learning.

**Some of the benefits that can be enjoyed with our e-Learning:**

- *Students are more motivated and focused on their work.*
- *They can instantly share their work with peers, parents and teachers, to gain immediate feedback and advice to improve.*
- *The link between home and school can be more seamless.*
- *We access a huge number of online resources which are invaluable in the learning process.*
- *Students are prepared for a world which is increasingly utilising technology to work and communicate.*

**LEARNING EXTENSION AND ACCELERATE PROGRAMMES – YEAR 7 TO 10 (LEAP)**

Mahurangi College caters for students with outstanding gifts and talents or the potential for high performance in a range of areas. In Year 7 to 10 a LEAP programme provides opportunities in many different areas through extension classes and a range of different clubs and extra sporting opportunities.

**ACADEMIES SUPPORT EXTENSION LEARNING IN THE SENIOR SCHOOL – YEAR 11 TO 13**

High achievement in Year 11–13 requires a dedicated focus. To provide this to our students, we have three academies – Academic, Sporting and Performing Arts. All three provide incredible opportunities for extension and cater for students with gifts and talents in these key areas of school life.

**LEARNING SUPPORT**

The SENCO Department is responsible for learning support at Mahurangi College. We support students with a variety of learning differences. We also support those students who may be below the standard in their literacy and numeracy skills. At every year level, we identify and support students who need Special Assessment Conditions such as Reader/Writers for their exams. We offer booster literacy and numeracy programmes for those students who may struggle in these areas. Our teacher aides can also be found in many classes supporting students with their classwork. The SENCO department is located in a classroom near the library and we encourage students to ‘drop in’ for support with assignments and study for assessments.

**ENGLISH FOR SPEAKERS OF OTHER LANGUAGES (ESOL)**

The school offers the teaching of ESOL at all levels. An initial testing programme is carried out and students’ timetables are a combination of mainstream and ESOL classes are organised according to their English ability.

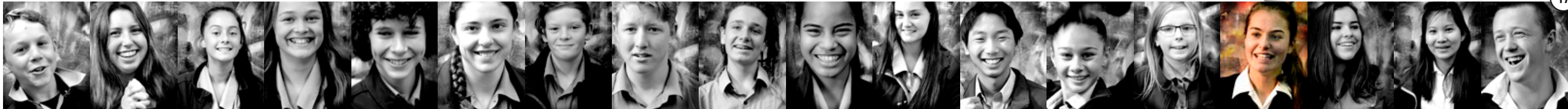
**STUDENT LEARNING CENTRE**

Central to the learning support facilities in the college are two purpose-built rooms that cater for students with physical, intellectual and sensory difficulties. These students are provided with individual programmes and the support of specialist teachers and teacher aides.



*“It has been great to have a forum where we have been able to discuss ideas beyond what we would cover in the classroom and extend our thinking.”*

*Hannah Powell – Head Girl and previous Academic Academy student*







# OUR FACILITIES

## TECHNOLOGY

We have three fully-equipped computer suites and strong school-wide networks that support our BYOD programme. We also have a fully commercial kitchen, where students are able to experience the hospitality world, and a media suite with a specialised greenroom.

## SPORTING FACILITIES

Two large gymnasiums provide facilities for a range of sporting activities, including basketball, volleyball, badminton, indoor soccer and a full-size indoor netball court. The school also has well-kept outdoor rugby and soccer fields, a large indoor pool and astroturf courts for netball and tennis.

## SCHOOL AUDITORIUM

The school auditorium is an excellent facility, well equipped for a range of performing arts activities within the school and home to our annual theatre production

## MUSIC AND DANCE

A fully fitted dance studio alongside well-equipped music rooms and practice suites sits alongside the auditorium.

## LIBRARY FACILITIES

Our large library caters for up to three classes of students at the same time. This space offers flexibility to students as a quiet place to study, a breakout room for group projects, a place to dive into a good book, or somewhere to quietly relax at morning tea and lunchtimes.

## STUDENT LEARNING CENTRE

We have a dedicated student learning centre providing specialist equipment and support for students with disabilities.

## ACADEMIC SERVICES

Two dedicated spaces offer places where students can receive extra support and academic advice about their learning and programmes.

## TE WHARENUI

Te Whakawhitiwhiti is the name of our wharenuui. It means 'Bring people together.' It's an excellent facility that provides learning opportunities for students in a Maori-based environment. The wharenuui can also cater for groups who wish to have a 'Noho Marae' (Sleep-over).

## OUTSIDE SPACES

Together with the excellent facilities the school has a range of outdoor seating and chill out spaces surrounded by well-kept gardens. The quad provides a sunny place to sit and relax. Various other spots around the school offer sun and shade for the students to make the most of during their break times.



*"I'm proud of our school, its beautiful setting and the wonderful facilities we get to use every day."*

*Zane Illingworth, Head Boy*







*There is a great saying: Teachers can change lives with just the right amount of chalk and challenges. While we have achieved six years of continual improvements in our academic results, it is our unique area, community and exceptional extracurricular programmes that help create well rounded young adults.*

#### OUTDOOR EDUCATION

With such an incredible area on our doorstep, it is no wonder we have an excellent outdoor education programme, providing the students at Mahurangi College many opportunities to learn the importance of group co-operation and self-reliance, all in our backyard. The aim is to challenge students to take risks, be brave, determined and adventurous and to link their learning about the world around them while experiencing New Zealand's beautiful outdoors.

All students in Year 7 to 10 are offered opportunities to participate in outdoor education camps and trips, as well as take part in activities such as sailing, canoeing, snorkelling, abseiling, tramping, bush craft and much more. In the senior school, Year 13 students start the year with a challenging outdoor education camp which encourages leadership, self-esteem, working cooperatively and is a highlight of the year.

The school provides the opportunity to become involved in the Duke of Edinburgh Awards. Various other activities, camps and field trips are organised as an important part of learning programmes in different subject areas.

#### SPORTS

We provide and encourage participation in a wide variety of sports. Annual inter-school exchanges are held with Hauraki Plains (Thames Valley) and Mt Roskill Grammar (Auckland). Most sports participate in regular Saturday or evening competitions with schools in the North Harbour area. Sports offered include netball,

soccer, hockey, rugby, yachting, cricket, tennis, athletics, swimming, rugby league, underwater hockey, basketball, skiing, rock climbing, equestrian, surfing, badminton, touch rugby, archery, sailing, motor-cross, stand up paddle boarding and tramping.

The school teams perform at the highest level, with a large number of students and teams receiving North Harbour, Auckland and National representative honours.

#### PERFORMING ARTS

We also have an appreciation for the arts in all forms and students are given countless opportunities to express themselves through our drama, dance, music and arts programmes. The school has Junior and Senior stage bands, orchestral groups and choirs that perform regularly at school and community functions. We're also involved in the annual Stage Challenge and Rockquest competitions. The students also have the opportunity to be involved in a junior or senior production. These productions combine singing, acting and dancing in the form of entertaining musicals that all of the community can enjoy.

#### CULTURAL GROUPS

Cultural performance groups offer students the opportunity to experience the richness of the many diverse communities we are part of. The Kapa Haka group meets regularly to perform and learn more about the Maori culture. The College is proud to have Te Whanau O Mahurangi represent it on official school occasions. Our Pasifika cultural group learns traditional songs, dances and percussion routines that they perform at various celebrations throughout the year.

#### CLUBS

Various clubs and interest groups are run throughout the year. Everything from fashion show groups, robotics to chess are run by passionate staff members for students to attend at lunchtime or after school.

*Maree Drost, Teacher*





*Thank you for reading this far. If you'd like to find out more about the school before enrolling, you're welcome to make a pre-enrolment appointment. Alternatively, you can join us on our Open Days. For more information, see the enrolment procedures and contacts on the school website.*

#### COMMUNICATION

We have a great team of staff at Mahurangi College. Our administration staff are key to ensuring that our large organisation runs smoothly each day. Both students and parents can contact the Student Services Office with any questions you have.

Communication and partnerships is key to developing well-balanced young people and we invite parents to the school on numerous occasions throughout the year to find out more about their children's learning, to celebrate success, to learn more about our education systems and to have input in the direction of the school. We clearly communicate upcoming events in a variety of ways and encourage parents to communicate with us if they have any questions or concerns.

#### UNIFORM

Our students take great pride in wearing the new Mahurangi College uniform. They look smart, professional and tidy at all times. Further information about the uniform guidelines can be found on the school website. The school uniform can be purchased online from the Argyle uniform store.

#### PARENT INVOLVEMENT

Mahurangi College takes pride in the connections that we have with the parent community. The college invites parents into the school for various reasons throughout the year, such as celebrating success, communication about student progress, and becoming involved in day-to-day life of the college. We also encourage parents to actively participate in school activities. One great way to contribute is by joining Friend of Mahu.

#### FRIENDS OF MAHU

Friends of Mahu encompasses the large group of parents and caregivers that get involved in the many facets of school life and strive to help make a difference to the students at Mahurangi College. This includes coaching sports teams, helping on school trips and events, helping with school productions and stage challenge, fundraising, being a reader/writer etc. A smaller group of parents and staff form the core of Friends of Mahu, and are responsible for some of the co-ordinating involved when undertaking events and fundraising.



**Mahurangi**  
COLLEGE

### CONTACT DETAILS

#### GENERAL ENQUIRIES

+64 9 425 8039 x 700  
admin@mahurangi.school.nz

#### STUDENT SERVICES

+64 9 425 8039 x 701

#### INTERNATIONAL STUDENTS

+64 9 425 8039 x 733

#### ABSENCE LINE

+64 9 425 8039 option 1

#### ENROLMENT ENQUIRIES

+64 9 425 8039 x 700

#### FACSIMILE

+64 9 425 7275

#### FRIEND OF MAHU

fomahu@mahurangi.school.nz





## Mahurangi COLLEGE

### **To our prospective parents and caregivers:**

Mahurangi is well on its way to becoming one of the leading secondary schools in New Zealand and we would be honoured to help educate and develop your child. We set high standards and are committed to an inclusive culture built on excellence in education, sport and the arts.

### **To our prospective students:**

We hope you join us, and when you do, we ask you to dream big, to take risks, be curious, brave, determined and resilient. But most of all to reach for the stars.

*David Macleod, Principal*